

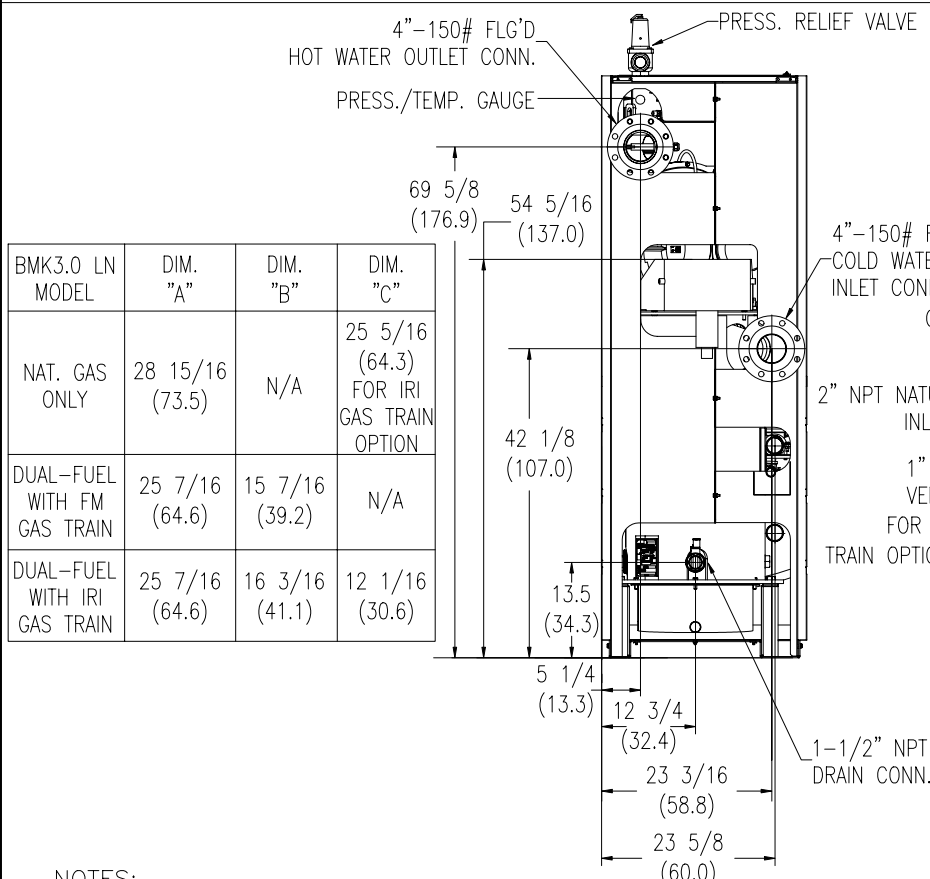
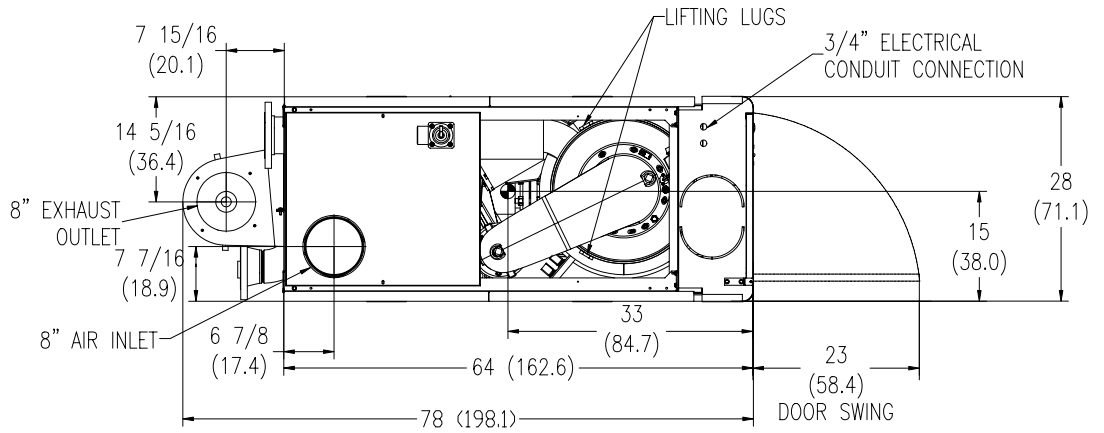
MATERIALS OF CONSTRUCTION

COMBUSTION CHAMBER	SHELL OUTER-1/4" CARBON STEEL,SA-53 GR.B SHELL INNER-1/4"STAINLESS STEEL,SA-312,304L OR 316L HEAD-1/4" CARBON STEEL,SA-516 GR.70 EXPANSION JOINT-1/4" STAINLESS STEEL,SA-240,GR.304L
PRIMARY HEAT EXCHANGER	UPPER TUBESHEET-3/8" STAINLESS STEEL,SA-240,316L LOWER TUBESHEET-5/8" STAINLESS STEEL,SA-240,316L TUBES-STAINLESS STEEL,5/8"O.D. X .065 WALL SA-249,316L SHELL-1/4" CARBON STEEL,SA-53,GR.A OR B EXPANSION JOINT-1/4" CARBON STEEL,SA-516,GR.70
SECONDARY HEAT EXCHANGER	UPPER TUBESHEET-5/8" STAINLESS STEEL,SA-240,316L LOWER TUBESHEET-5/8" STAINLESS STEEL,SA-240,316L TUBES-STAINLESS STEEL,5/8"O.D. X .065 WALL SA-249,316L SHELL-1/4" CARBON STEEL,SA-53,GR.A OR B

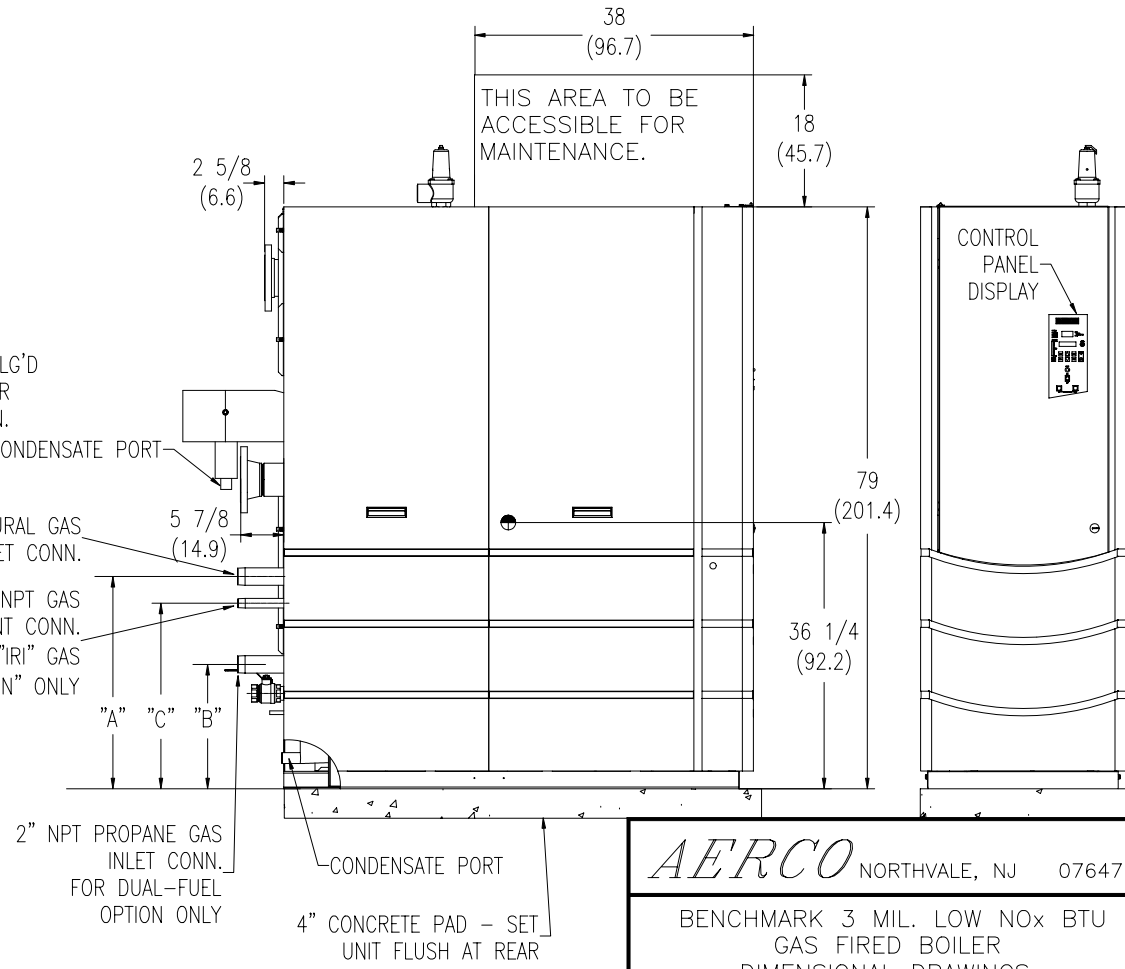
HEAT EXCHANGERS & COMBUSTION CHAMBER DESIGN STANDARDS

MAX. WORKING PRESS. (PSIG)	MAXIMUM TEMP. (°F)	TEST PRESS. (PSIG)	HT'G SURFACE SQ.FT.	MIN. RELIEF VA. CAPACITY MBH
160	210	240	178	3000

ASME B & PV CODE: SECTION IV STAMP H (PRIMARY H.X.)
SECTION VIII STAMP U (SECONDARY H.X.)



BMK3.0 LN MODEL	DIM. "A"	DIM. "B"	DIM. "C"
NAT. GAS ONLY	28 15/16 (73.5)	N/A	25 5/16 (64.3) FOR IRI GAS TRAIN OPTION
DUAL-FUEL WITH FM GAS TRAIN	25 7/16 (64.6)	15 7/16 (39.2)	N/A
DUAL-FUEL WITH IRI GAS TRAIN	25 7/16 (64.6)	16 3/16 (41.1)	12 1/16 (30.6)



AERCO NORTHVALE, NJ 07647
BENCHMARK 3 MIL. LOW NOx BTU GAS FIRED BOILER
DIMENSIONAL DRAWINGS

NOTES:
1) ALL DIMENSIONS SHOWN ARE IN INCHES (CENTIMETERS).
2) RELIEF VALVE, TRIDICATOR & CONDENSATE TRAP ARE INCLUDED SEPARATELY IN SHIPMENT.

DWN.BY_GS DATE 052506	REV.
SCALE _____ SIZE A	AP-A-802 F
CHKD. _____ APPD. _____	
REV.DATE _____	