



COMPARE. YOU'LL TAKE TACO.

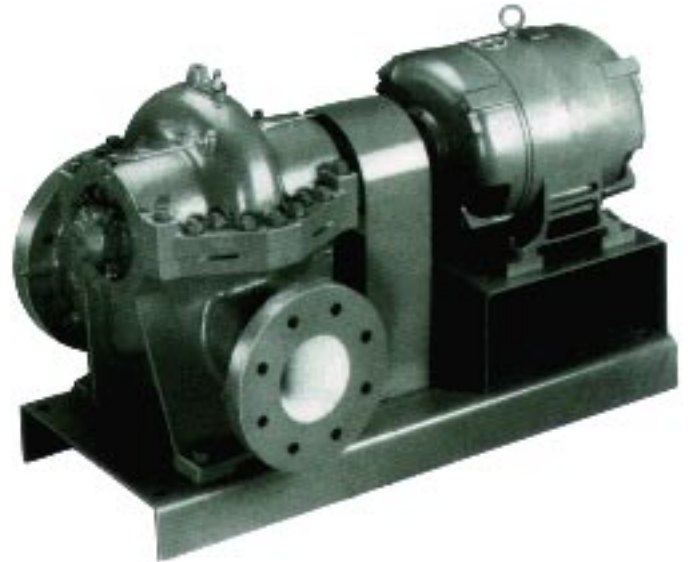
"TA" Single Stage Double Suction Horizontal Split Case Pump

Six Major Benefits for "TA" Series Pump Users

- Maximum operating pressure of 300 PSI. The rugged, heavy-duty casing design allows higher working pressures.
- Quick access for service and maintenance. The top half of the casing is easily removed to allow service of rotating unit without disturbing piping system.
- Low NPSH requirements and increased efficiency. The impeller is specifically designed to assure minimum NPSH and maximum pump efficiency as well as stable performance throughout the operating range.
- Compact arrangement increases seal and bearing life. The mechanical seal option reduces the shaft length and minimizes shaft deflection, thereby increasing both seal and bearing life.
- Balanced axial loads for maximum bearing life. The double suction design virtually eliminates axial thrust and reduces bearing loading. The bearings are heavy-duty type, grease lubricated.
- No need to replace casing if wear rings require service. The case wear rings are separate from the case itself and are replaceable.

Heavy Duty Casing For Greater Strength

Extra heavy construction of the pump casing provides greater structural integrity and reduces the risk of distortion. The pump feet are cast integrally with the bottom half of the volute casing and extended to provide support to the inserts which carry the pump bearings.



Maintenance is Easy and Fast

With the top half of the casing removed, the complete pump rotating assembly can be withdrawn without disturbing the piping system. Pump inlet and outlet flanges are cast in the bottom half casing. Flanges and casing are tapped and plugged for gauge and priming connections. An air release valve and flushing connections are provided in the upper casing. The top and bottom half casings are aligned by dowels, sealed by a gasket and bolted together.

High Efficiency Impeller

The impeller is generally of the double-entry type with Francis vanes, keyed to the shaft and locked in position. The impeller hubs are designed to accommodate impeller wear rings, if required. Impellers are balanced dynamically and hydraulically. Passage ways are smoothed for maximum efficiency.

TACO, INC.

1160 Cranston Street, Cranston, RI 02920
Telephone (401-942-8000 Telex: 92-7627

TACO (Canada) LTD.

1310 Aimco Blvd., Mississauga, Ontario L4W 1B3
Telephone (416) 625-2160 Telex: 06-961179



COMPARE. YOU'LL TAKE TACO.

With the introduction of the "TA" Series Horizontal Split Case Pump designs, Taco continues to expand its leadership in the design of centrifugal pumps for commercial HVAC and industrial applications. Taco can truly be the single source for all your pumping needs.

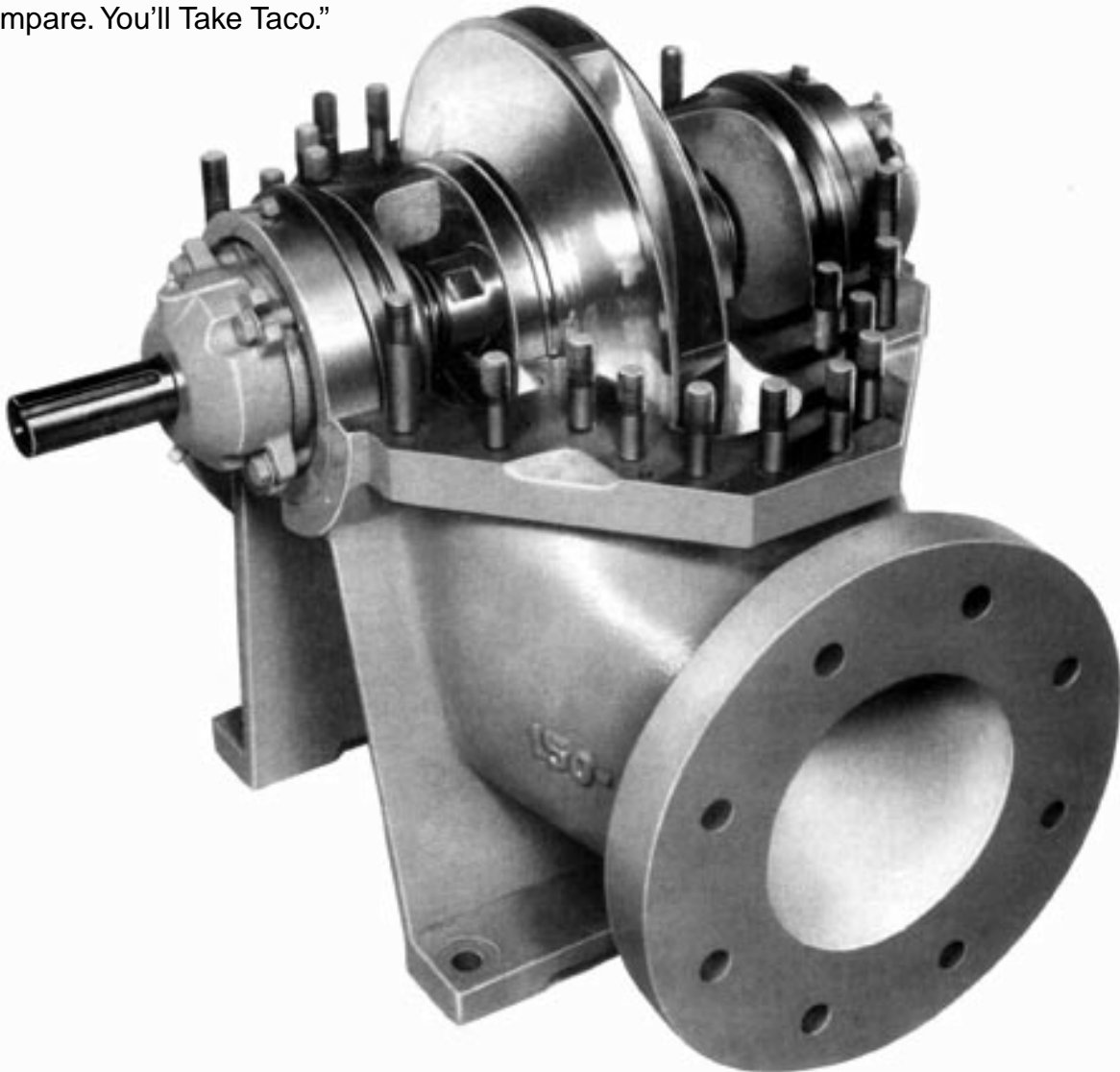
Over 300 models, ranging from 1/40 HP to 400 HP now offer the maximum flexibility to select the optimum pump design for the specific system requirements.

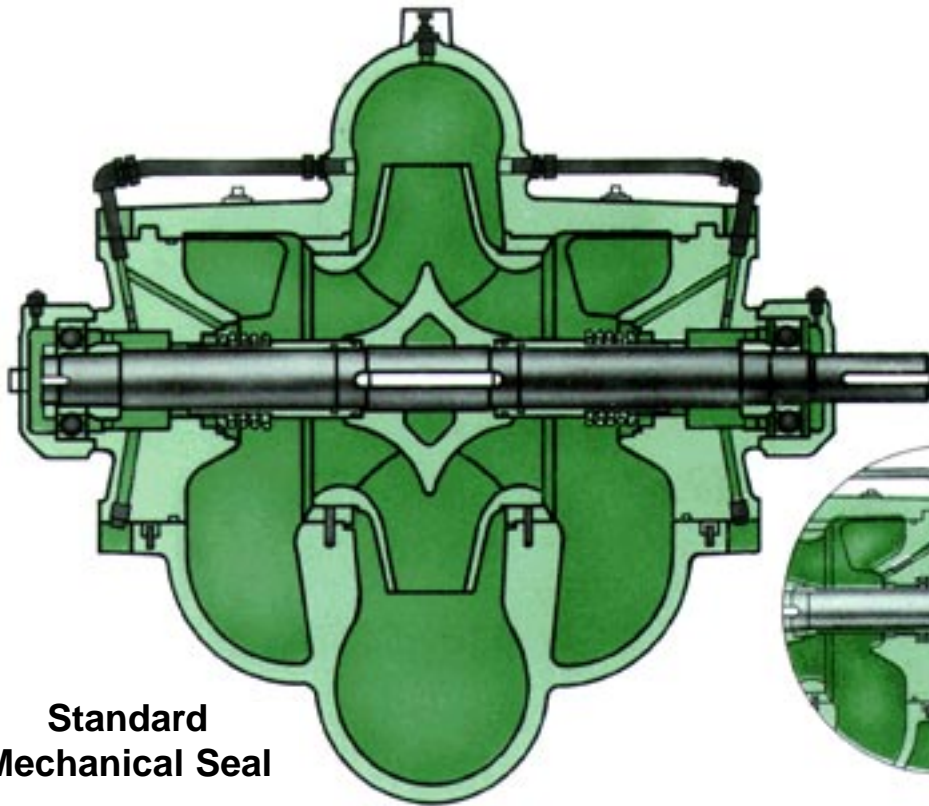
The full range of Taco products is more than pumps. Taco is also your single source company for a wide variety of HVAC and other hydronic specialty components including; constant pressure booster systems, heat transfer equipment, diaphragm tanks, flow measurement products and more. That's why we're confident that when you "Compare. You'll Take Taco."

The "TA" Series Split Case Pump model represents a major advance in pump design. By utilizing a new modular construction technique, pump performance from 60 GPM up to 6,000 GPM is available from just three basic bearing and shaft modules.

Modular construction results in:

- Multiple seal and construction options for application flexibility.
- Simplified maintenance.
- Design flexibility to accommodate future performance needs.





Standard Mechanical Seal

Optional Balanced Seal

Optional Packing

MATERIALS OF CONSTRUCTION

	Standard	Optional
Casing	Cast Iron	
Impeller	Bronze	Cast Iron
Wear Ring	Bronze	Cast Iron
Shaft	Carbon Steel	Stainless Steel
Insert	Cast Iron	
Shaft Sleeve	Bronze	Stainless Steel

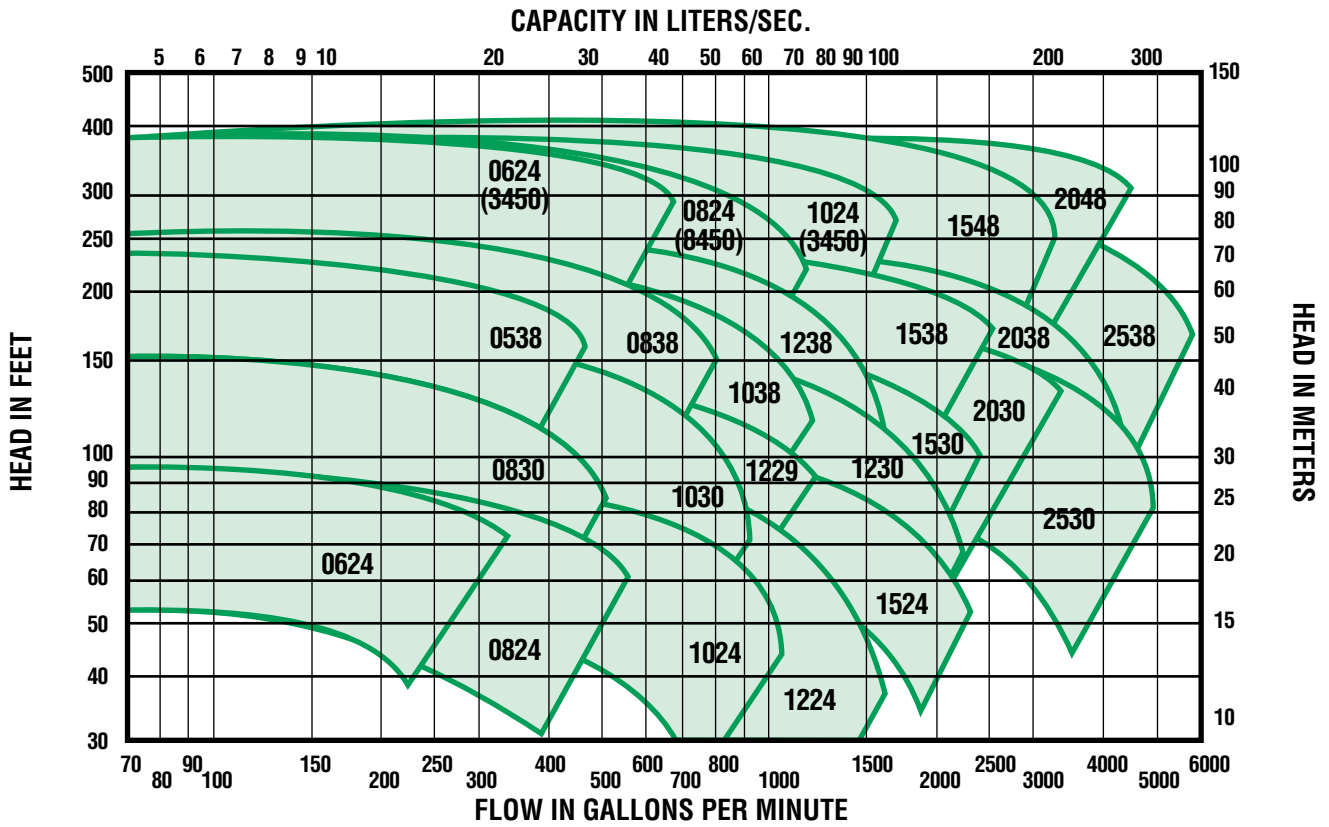
OPERATING SPECIFICATIONS

	Standard	Optional
Pressure	300 PSI Maximum Operating Pressure (125 ANSI or 250 ANSI Flanges Standard)	
Temperature		
Mechanical Seal	250°F	300°F
Packing	250°F	300°F
Wear Rings	Case Wear Rings	Impeller Wear Rings
Seal Flushing	Recirculation Line	Filter & Abrasive Separators
Motors	All Standard NEMA Motors (T or TS)	

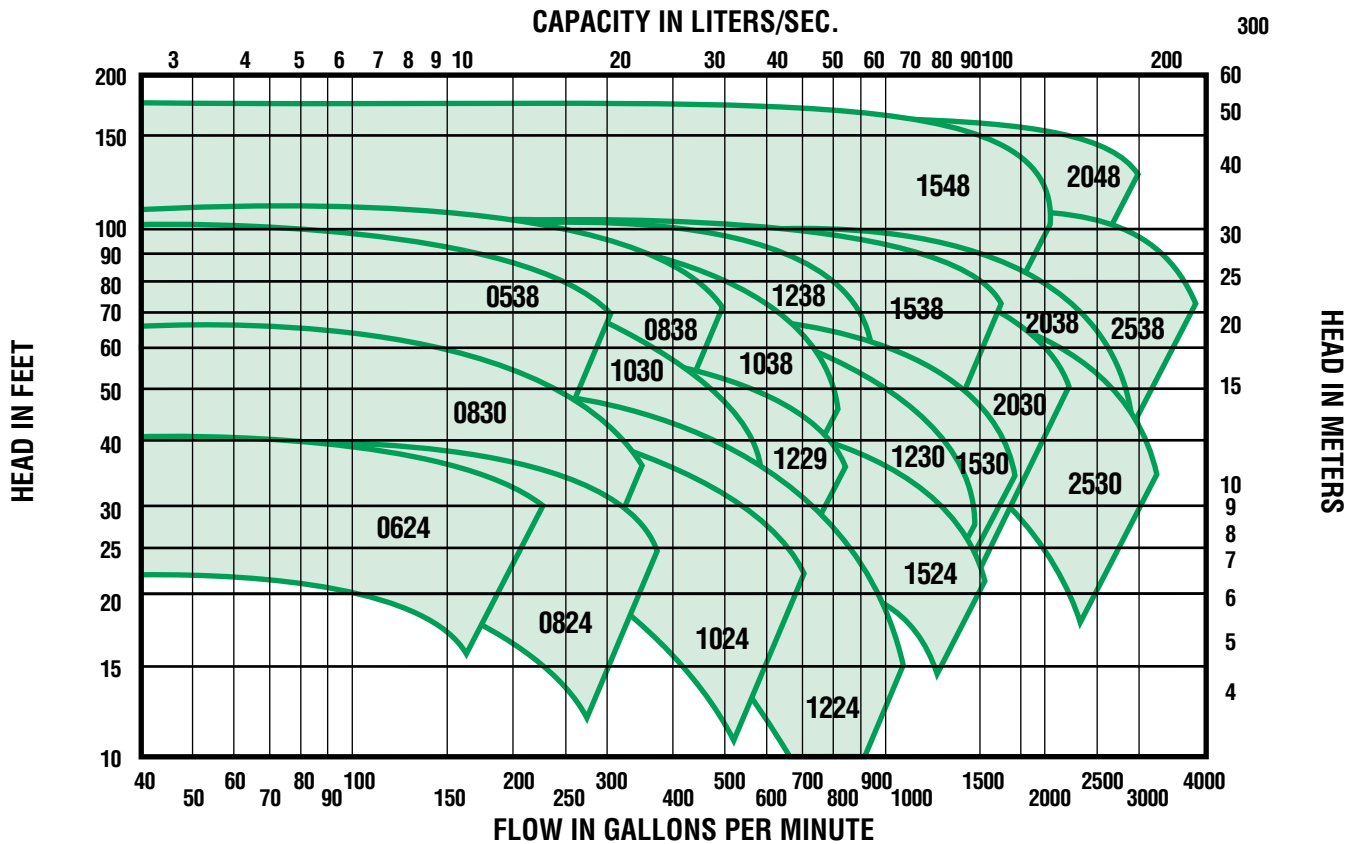
ADDITIONAL OPTIONS

- Drip Type Base
- Two Rotation Options
- Packed Stuffing Box
- Balanced Mechanical Seals

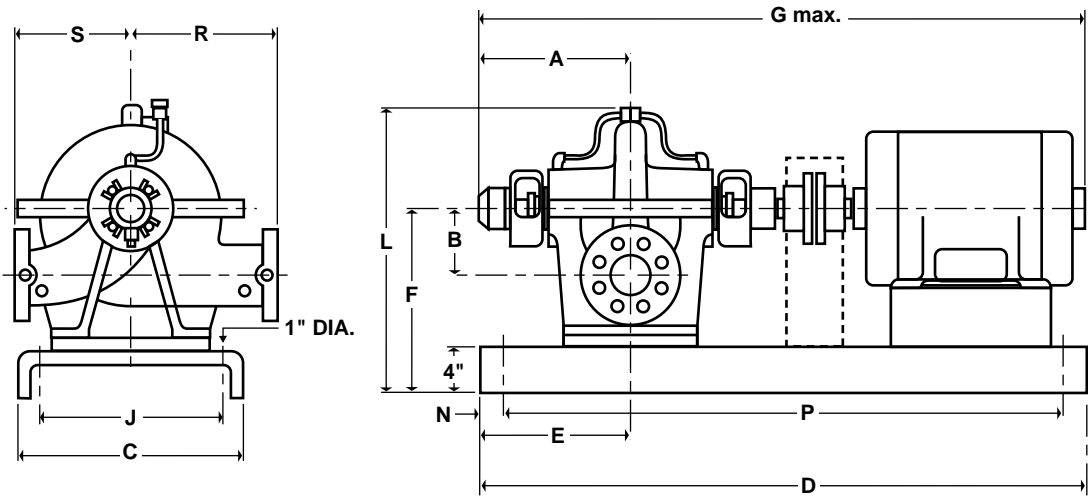
"TA" SERIES PERFORMANCE FIELD 1750 RPM (Unless Otherwise Specified)



PERFORMANCE FIELD 1150 RPM



"TA" SERIES PUMP DIMENSIONS



MODEL NO.	CONN.	T or TS MOTOR FRAME	A	B	C	D	E	F	G MAX.	J	R DISCH.	S SUCT.	L	N	P							
TA0538	3X2	213-215	9-11/16	6-11/16	18	41	10-9/16	16-5/16	39-11/16	14-1/2	11	13	25-13/16	1-1/4	38-1/2							
		254-256				48		16-5/8	47-1/4				26-1/8		45							
		284-286																				
TA0624	3X2 1/2	143-145	9-11/16	5-1/8	18	41	11-5/8	15-1/8	34	14-1/2	8-7/8	10-1/16	22-7/16	1-1/4	38-1/2							
		182-184				46	11-11/16		39-1/2				41-1/2									
		213-215						15							22-5/16							
		284-286				22	55	13-7/8	48-9/16				18-1/2		1	53						
		324-326																				
TA0824	4X3	143-145	9-11/16	5-1/8	18	41	11-5/8	15-1/8	34	14-1/2	9-1/16	10-5/8	22-1/4	1-1/4	38-1/2							
		182-184				46	11-11/16		44-5/8				41-1/2									
		213-215						15							22-1/8							
		284-286				22	55	13-7/8	49-13/16				18-1/2		1	53						
		324-326																				
364-365																						
TA0830	4X3	143-145	9-11/16	5-7/8	18	41	11-5/8	15-1/8	34	14-1/2	10-13/16	11-7/16	23-1/4	1-1/4	38-1/2							
		182-184				46	11-11/16	15	44-5/8				41-1/2									
		213-215													23-1/8	41-1/2						
254-256																						
TA0838	4X3	213-215	9-11/16	6-7/8	18	41	10-9/16	16-5/8	39-11/16	14-1/2	13-3/4	13-3/8	26-11/16	1-1/4	38-1/2							
		254-256				48			48-5/16				26-13/16		45							
		284-286							16-3/4													
		324-326																				
TA1024	6X4	182-184	11-13/16	6-11/16	18	46	11-5/8		41-7/8	14-1/2	9-13/16	12-3/16	26-13/16	1-1/4	41-1/2							
		213-215																				
		254-256				22	55	10-7/16	17-3/8						501/4	55-1/2	18-1/2	53				
		364-365																1	57			
		404-405				24	59	9-4/4							59	20-1/2						
T01030	5X4	182-184	9-11/16	6-11/16	18	46	11-11/16	16-5/8	47-1/4	14-1/2	10-13/16	12-5/8	25-11/16	1-1/4	41-1/2							
		213-215																				
		254-256																				
		284-286																				
TA1038	5X4	213-215	11-13/16	7-1/2	22	55	10-7/16	17-9/16	45-5/16	18-1/2	13-3/4	13-3/8	28-1/2	1	53							
		254-256						18-9/16	50-3/16				29-1/2									
		284-286																				
		324-326						17-3/8	56-5/8													
		364-365																				

MODEL NO.	CONN.	T or TS MOTOR FRAME	A	B	C	D	E	F	G MAX.	J	R DISCH.	S SUCT.	L	N	P					
TA1224	6X5	213-215	10-15/16	7-7/8	18	48	10-9/16	17-3/8	41-15/16	14-1/2	9-13/16	12-13/16	26-5/16	1-1/4	45					
		254-256					9-3/8		50-3/16											
		284-286																		
TA1229	6X5	213-215	9-11/16	6-5/16	18	48	10-9/16	17-3/8	49-13/16	14-1/2	11-7/16	12-3/16	26-1/4	1-1/4	45					
		254-256											17-1/2			26-3/8				
		284-286																		
TA1230	6X5	213-215	10-15/16	6-7/8	18	48	9-3/8	17-3/8	52-5/16	14-1/2	11-7/16	13-3/16	27	1-1/4	45					
		254-256																		
		284-286																		
		324-326			20	55	12-3/16	17-3/8	54-15/16	18-1/2	27	1	53							
364-365																				
TA1238	6X5	215	11-13/16	8-1/4	22	55	10-7/16	19-3/8	53-1/6	18-1/2	13-3/4	15-3/4	31-5/8	1	53					
		254-256																		
		284-286																		
		324-326																		
TA1524	8X6	213-215	10-15/16	7-7/8	18	48	10-9/16	19-3/8	41-15/16	14-1/2	12-3/16	14-3/8	28-5/8	1-1/4	45					
		254-256					9-3/8		52-13/16											
		284-286																		
		324-326					19-1/2		28-3/4											
TA1530	8X6	254-256	11-13/16	9-1/4	22	55	10-7/16	21-5/16	57-5/8	18-1/2	12-3/8	14-3/8	32-3/4	1	53					
		284-286																		
		324-326																		
		364-365																		
TA1538	8X6	254-256	11-13/16	8-1/4	22	55	10-7/16	21-5/16	57-5/8	18-1/2	13-3/4	16-1/8	33-7/16	1	53					
		284-286																		
		324-326																		
		364-365			24	66	14-3/8	67-7/8	20	34-1/4	1-1/4	62-1/2								
		404-405																		
444-445																				
TA1548	8X6	404-405	14-5/8	10-5/8	26	69	12-15/16	25-1/4	74-15/16	22	17-11/16	20-1/16	40-3/8	1-1/4	64-3/4					
		444-445																		
TA2030	10X8	284-286	13-5/8	11-1/4	24	59	13-5/8	25-1/4	61-1/8	20	15-3/16	17-1/16	37-9/16	1-1/4	54-3/4					
		324-326																		
		364-365																		
		404-405			26	69	15-5/8	65-1/2	22	64-3/4										
TA2038	10X8	286	14-5/8	8-7/8	24	66	10-11/16	22-1/8	59-5/16	20	17-11/16	18-7/8	35-1/2	1-1/4	62-1/2					
		324-326						22-1/4	61-7/8											
		364-365						23-1/4	64											
		404-405						22-1/8	74-1/4											
		444-445																		
TA2048	10X8	364-356	14-5/8	10-5/8	26	69	13-11/16	25-1/4	74-1/4	22	17-11/16	19-11/16	40-1/16	1-1/4	64-3/4					
		404-405							77-1/2						82-11/16					
		444-445																		
447-449																				
TA2524	10X10	324-326	13-5/8	8-1/4	24	59	13-5/8	21-5/16	61-1/8	20	13-3/8	19-5/16	33-3/8	1-1/4	54-3/4					
		364-365																		
TA2530	10X10	364-365	13-5/8	9-13/16	24	59	13-5/8	25-1/4	61-1/8	20	15-3/4	16-15/16	37-7/8	1-1/4	54-3/4					
		404-405													26	69	15-5/8	71-1/4	22	64-3/4
		444-445																		
TA2538	12X10	364-365	14-5/8	10-7/16	26	69	13-11/16	25-1/4	74-1/4	22	17-11/16	21-1/4	41-1/8	1-1/4	64-3/4					
		404-405																		
		444-445							77-1/2						77-11/16					
		447-449																		