

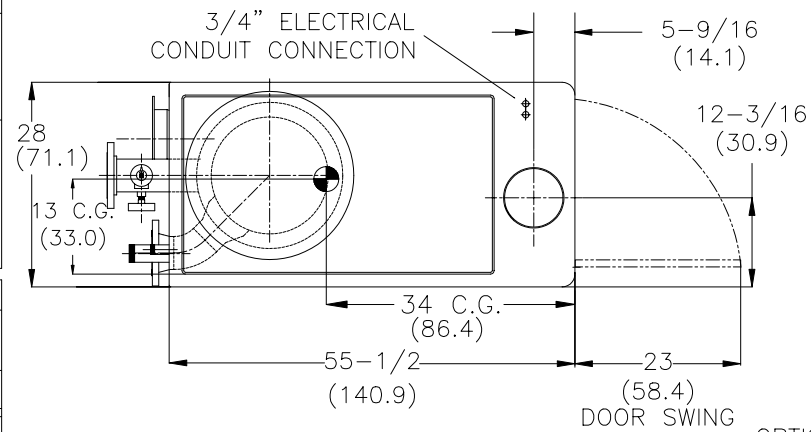
MATERIALS OF CONSTRUCTION

COMBUSTION CHAMBER	SHELL OUTER-1/4" CARBON STEEL,SA-53 GR.B SHELL INNER-1/4"STAINLESS STEEL,SA-312,304L OR 316L HEAD-1/2" CARBON STEEL,SA-516 GR.70 EXPANSION JOINT-1/4" CARBON STEEL,SA-516,GR.70
HEAT EXCHANGER	UPPER TUBESHEET-5/16" STAINLESS STEEL,SA-240,316L LOWER TUBESHEET-5/16" STAINLESS STEEL,SA-240,316L TUBES-STAINLESS STEEL,5/8"O.D. X .065 WALL SA-249,316L SHELL-1/4" CARBON STEEL,SA-53,GR.B EXPANSION JOINT-1/4" CARBON STEEL,SA-516,GR.70

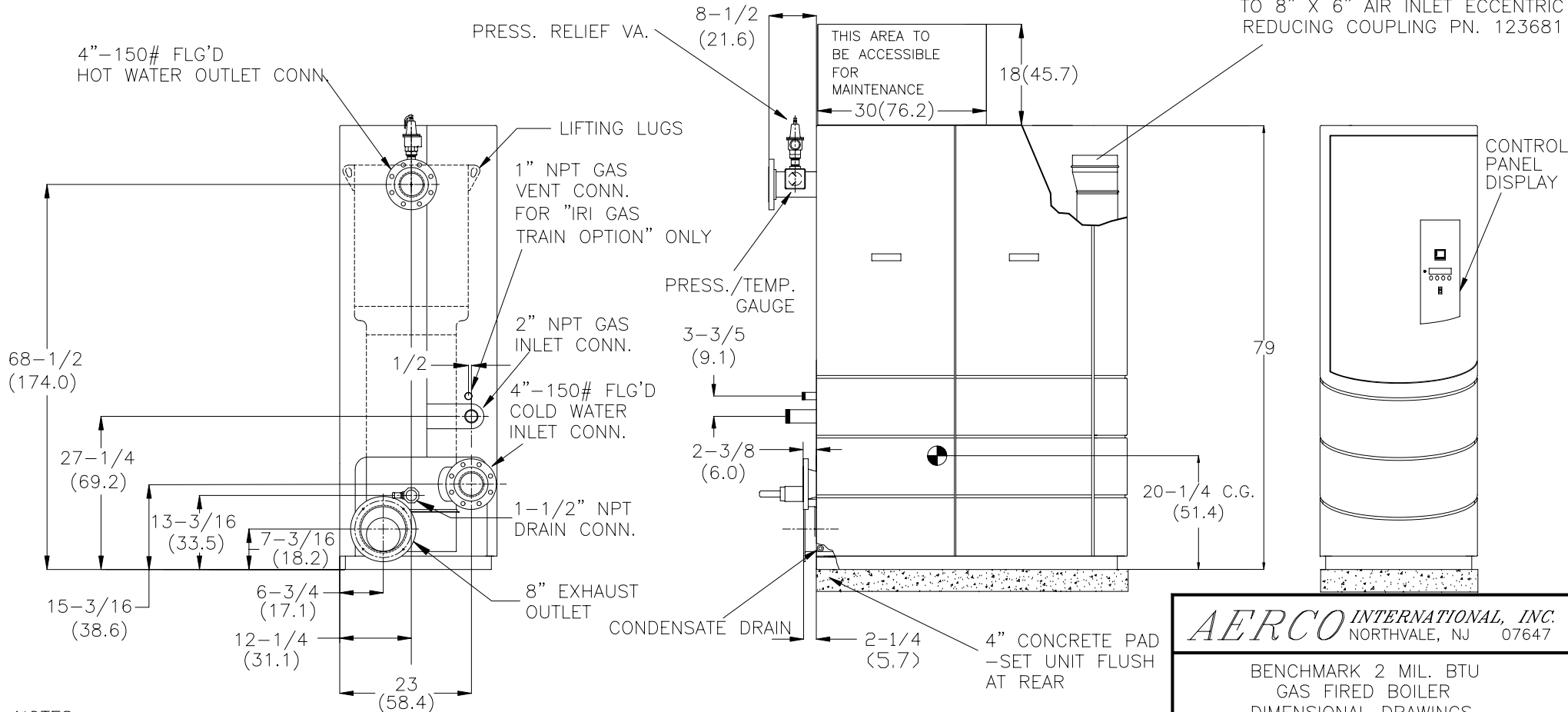
HEAT EXCHANGER & COMBUSTION CHAMBER DESIGN STANDARDS

MAX. WORKING PRESS. (PSIG)	MAXIMUM TEMP. (°F)	TEST PRESS. (PSIG)	HT'G SURFACE SQ.FT.	MIN. RELIEF VA. CAPACITY MBH
160	210	240	95	2000

ASME B & PV CODE SECTION IV STAMP H



OPTIONAL CONNECTION FOR 8" DIAMETER SEALED COMBUSTION AIR DUCTWORK TO 8" X 6" AIR INLET ECCENTRIC REDUCING COUPLING PN. 123681



NOTES:

- 1) ALL DIMENSIONS SHOWN ARE IN INCHES (CENTIMETERS)
- 2) RELIEF VALVE, SUPPLY GAS REGULATOR & CONDENSATE TRAP ARE INCLUDED SEPARATELY IN SHIPMENT

AERCO INTERNATIONAL, INC.
NORTHVALE, NJ 07647

BENCHMARK 2 MIL. BTU
GAS FIRED BOILER
DIMENSIONAL DRAWINGS

DWN. BY <u>CZ</u> DATE <u>040301</u>	REV.
SCALE <u>1:32</u> SIZE <u>A</u>	AP-A-739
CHKD. _____ APPD. _____	L
REV. DATE _____	