



MODEL KC-1000 GWW TECHNICAL DATA

AERCO KC-1000 Gas Fired Commercial Water Heating System

The AERCO KC-1000 Water Heater utilizes state-of-the-art technology to easily meet highly demanding commercial and industrial hot water requirements in a compact and reliable condensing design. The AERCO modulating concept quickly and efficiently maintains **precise** water temperature control for all flow requirements. Water heating thermal **efficiencies can range from 93% to 99+%**. Its efficiency actually increases at lower flows due to its unique inverse efficiency curve.

The advanced control system of the KC-1000 modulates the burner to the precise point needed to exactly match input load. This is done over a 14:1 ratio (from 1,000,000 BTUH to 70,000 BTUH) in as little as 4 seconds if necessary. **Wasteful overshooting and cycling are virtually eliminated as are storage tanks, mixing valves and other temperature averaging components** in most applications. The set point is adjustable from 100°F to 200°F and control to $\pm 4^\circ\text{F}$ is easily achieved.

Direct venting, sealed combustion and conventional vent capabilities provide broad installation flexibility. Small foot print, doorway size, and quiet operation make it ideal for retrofit. Tight temperature control, high efficiency, reliability and longevity make the KC-1000 water system a truly unique and advanced design.



RECOVERY CAPACITY*

Temperature Rise(F)	60°	70°	80°	90°	100°	110°	120°	130°	140°
Gallons Per Hour	1860	1594	1395	1240	1116	1014	930	859	797

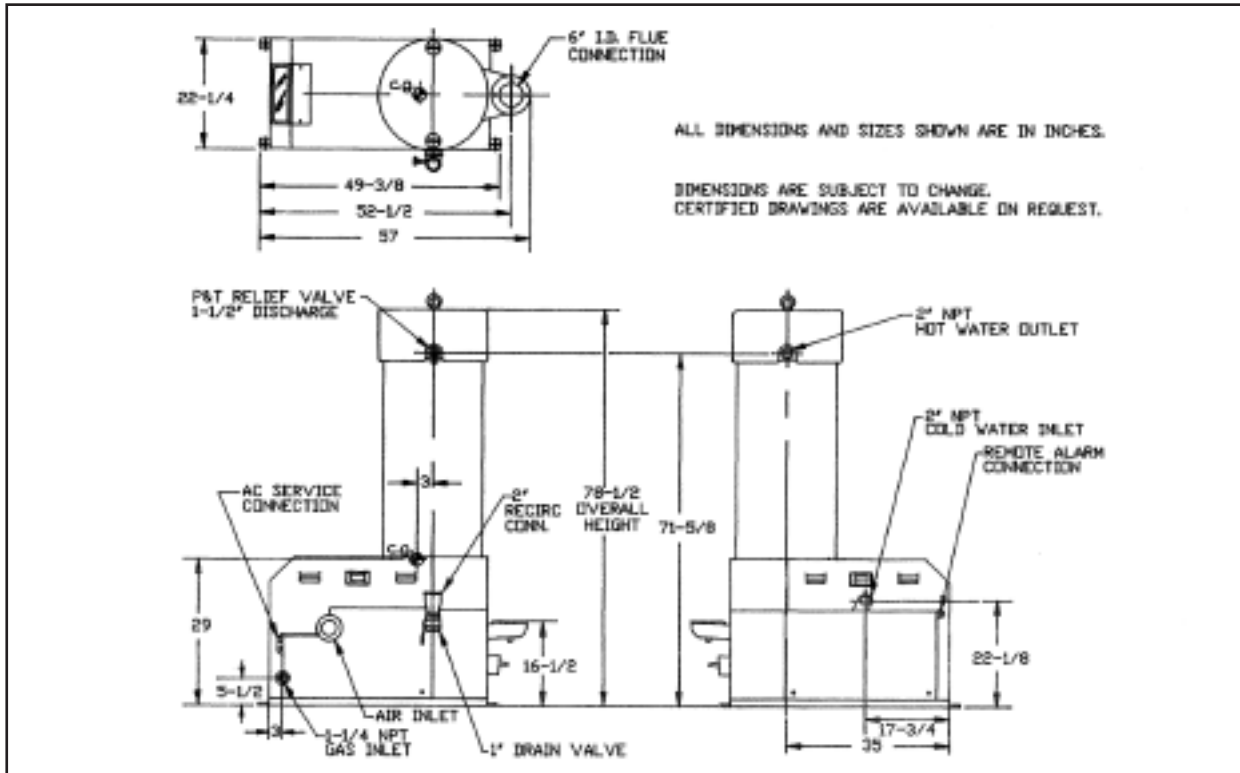
*In condensing mode <2000 ft above sea level

KC-1000 FEATURES

- Precise Temperature Control $\pm 4^\circ\text{F}$
- Fully Modulating, 14:1 Energy Input
- Condensing Design
- Compact, Space Efficient Design
- Natural Gas or Propane
- Outlet Water Temperature of 100° to 200°F
- UL, ULC Listed for Alcove Installation on Combustible Flooring
- Ideal for New or Retrofit
- UL, ULC Listed, FM Approved, ASME Stamped
- 155 PSIG ASME Working Pressure Certified
- Direct Vent or Conventional Flue Capabilities
- Optional Sealed Combustion
- Quiet Operation throughout Firing Range
- Remote Alarm Contacts



Dimensions



KC-1000 SPECIFICATIONS

Adjustable Temperature ControlUp To 200°F

Accuracy+/-4°F

Input1,000,000 BTUH

Net Output930,000 BTUH

Turndown Ratio14:1

Flue Size6" Diam

Water Inlet & Outlet2" NPTF

Gas Connection1 1/4" NPT Male

Gas Pressure Requirements8.5" WC @ Full Load
14" WC Maximum

Maximum Continuous Water Flow30 GPM

Condensate Connection5/8" I.D. Male Hose Fitting

Pressure Rating155 PSIG @ 210°F

Standard Listing & ApprovalUL, ULC, ASME

Optional ApprovalIRI

Electrical Requirements120/1/60/20 AMP

Standby Power Consumption40 watts

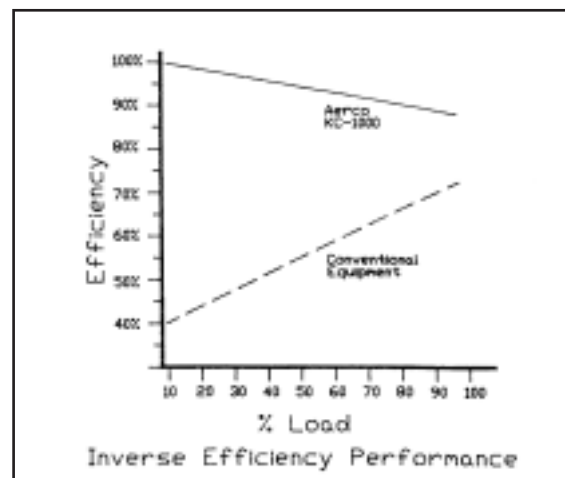
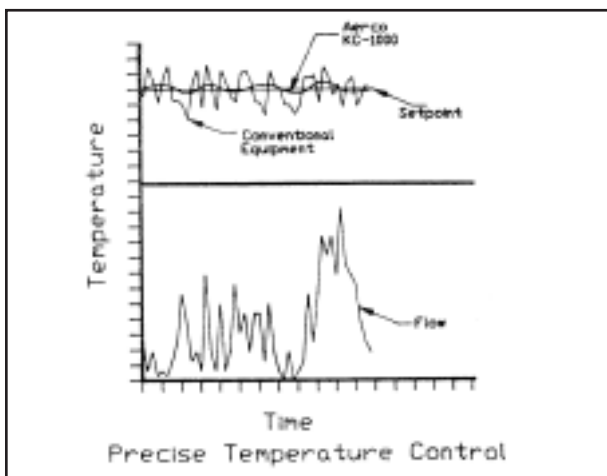
Water Pressure Drop @ 20 gpm0.7 psi

Water Volume23 gallons

Installed Weight1350 lbs

Shipping Weight1250

CONTROL WITH EFFICIENCY



Represented by:

HEAT EXCHANGES • WATER HEATERS • BOILERS
CONTROL VALVES • STEAM GENERATORS

AERCO

HOT WATER SYSTEMS
AERCO INTERNATIONAL, INC. • 159 PARIS AVE.
NORTHVALE, N.J. 07647-0128 • (201) 768-2400 • FAX 201-768-7789
www.aerco.com • E-mail: info@aerco.com

Specifications subject to change.
Consult website or contact AERCO.
GFW-1 2/05 5M
New DOC 2/05